



*Two Rivers*

*Coalition*

*www.TwoRiversCoalition.org*

*An alliance of the Black River  
and Paw Paw River Watersheds*

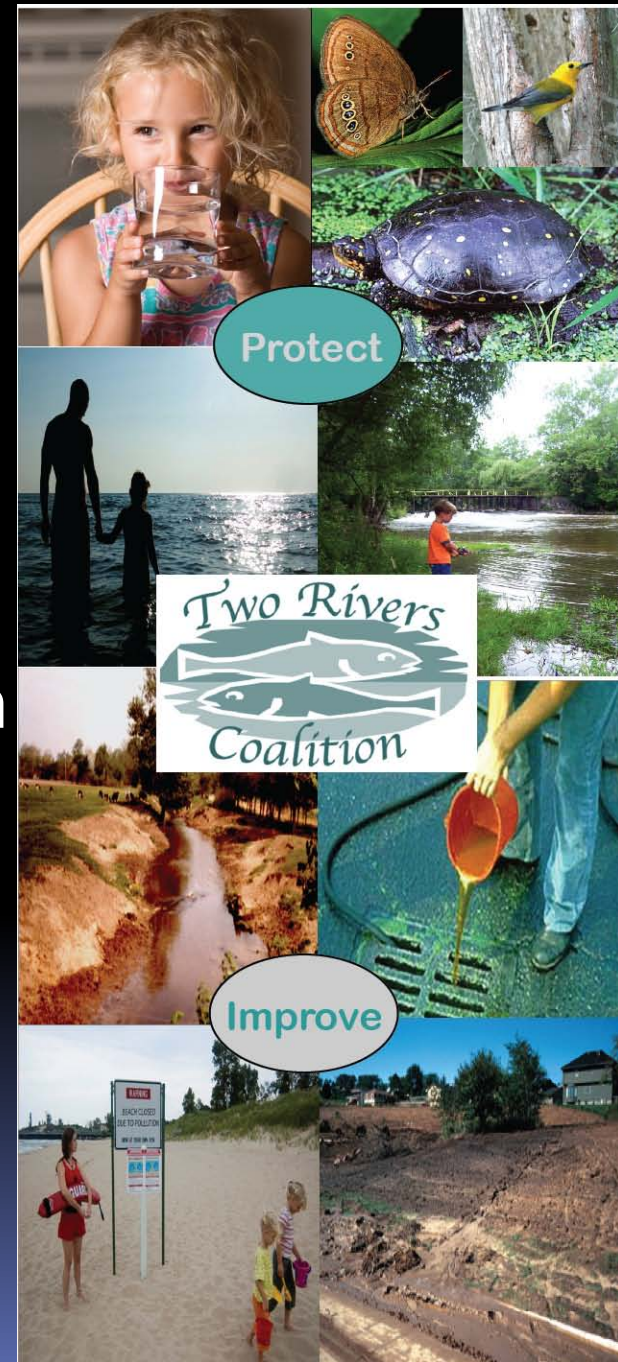
# **TRC Making a Difference**

***TRC Annual Meeting 2014***

***Marcy Colclough***

# Two Rivers Coalition

- 501(c)3 formed in 2009
- A membership organization
- **Our Mission** - working to protect the health of the Black River and Paw Paw River Watersheds through **conservation**, **education**, and **advocacy**.
- **Our Vision** –  
**Clean rivers and lakes**



**2 Watersheds**  
**4 Counties**  
**1 Tribal Nation**  
**30 Townships**  
**18 Cities/Villages**

Fennville

South Haven

*Black River Watershed*

Bangor

*Paw Paw River Watershed*

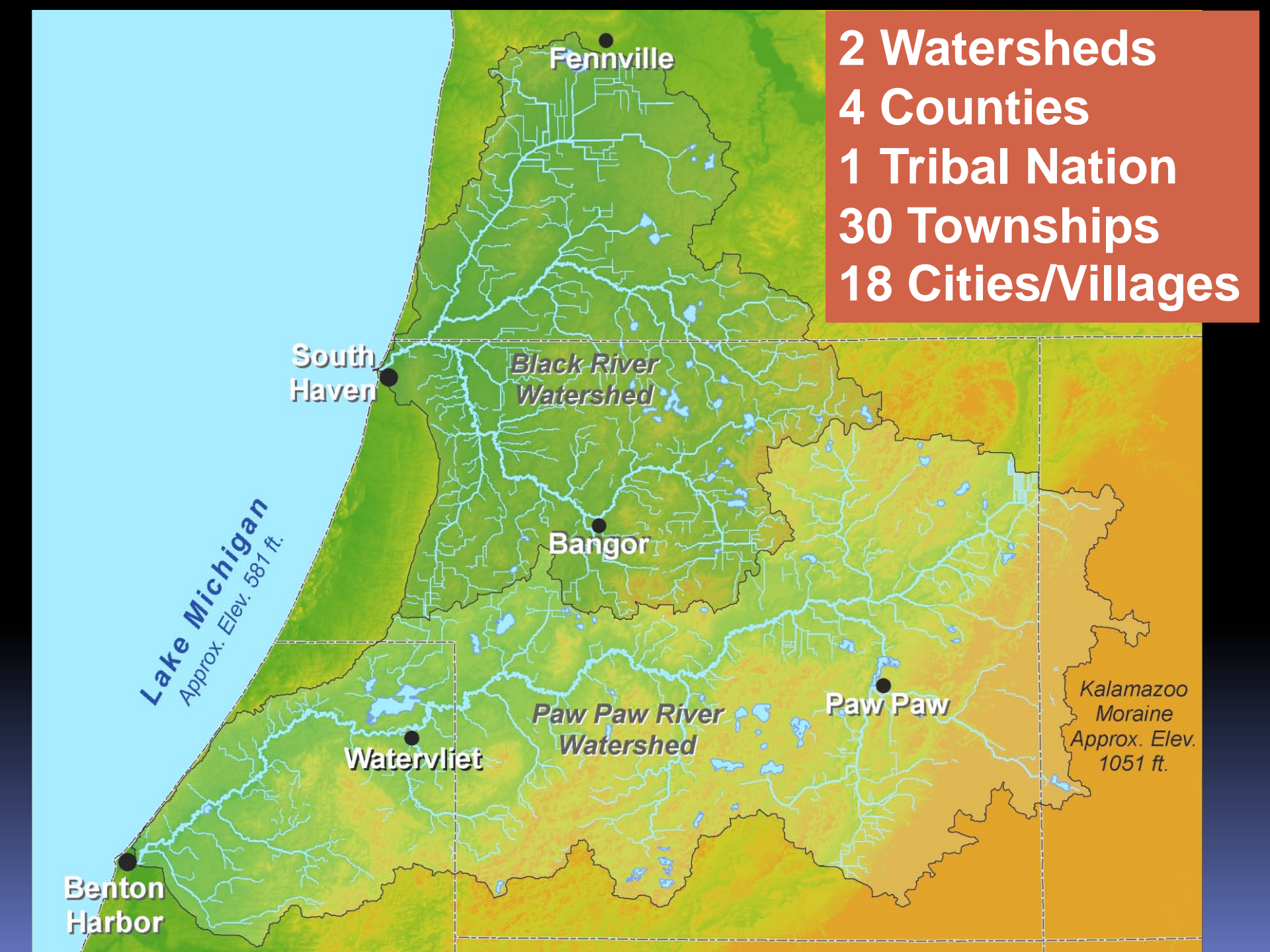
Paw Paw

Watervliet

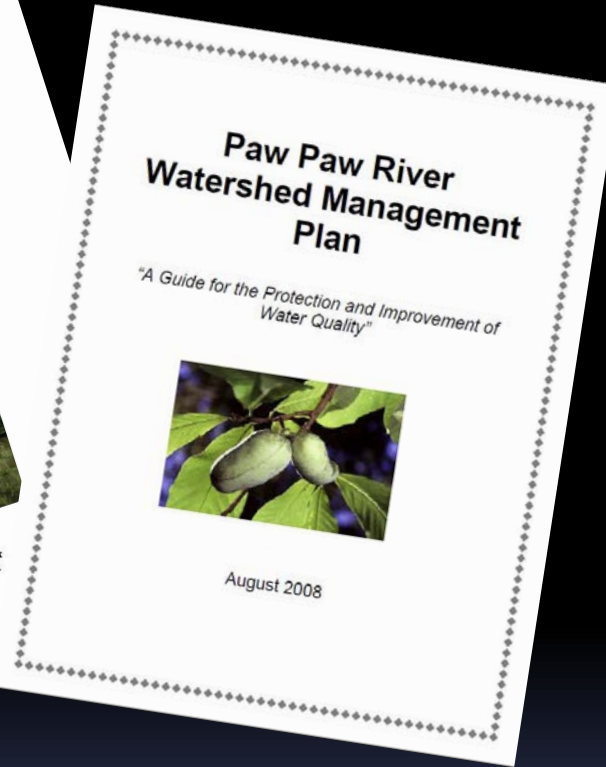
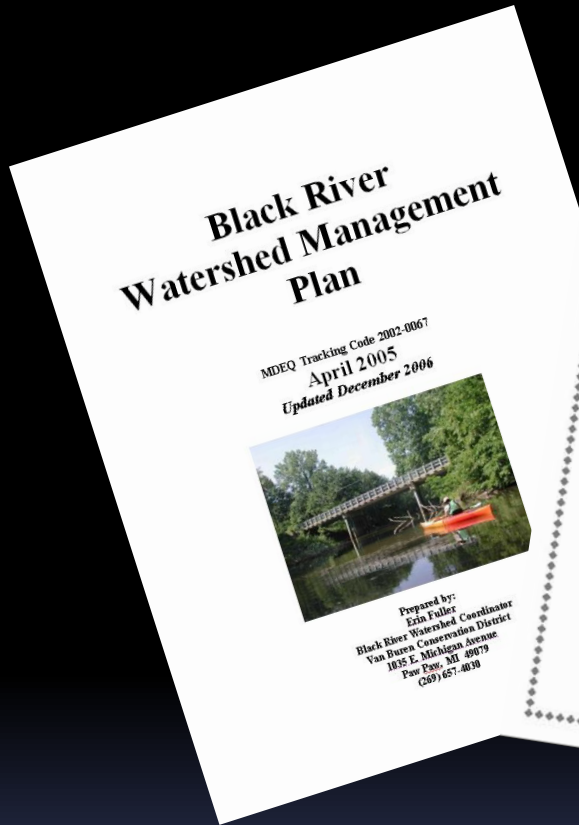
Kalamazoo Moraine  
Approx. Elev. 1051 ft.

*Lake Michigan*  
Approx. Elev. 587 ft.

Benton Harbor



# Watershed Management Plans



- Maps
- Photos
- Fascinating facts and figures
- **Action plans**



[www.TwoRiversCoalition.org](http://www.TwoRiversCoalition.org)

# Major Partners - 2014

- Van Buren Conservation District
- Van Buren County Drain Commissioner
- Michigan Department of Environmental Quality
- Southwest Michigan Planning Commission
- Bangor -South Haven Heritage Water Trail Association
- Southwest Michigan Land Conservancy
- Berrien County Road Commission
- Cardno JFNew
- City of South Haven
- Village of Paw Paw
- Paw Paw Library
- Foundry Hall
- Celery Pond Advocates



# Conservation, Education & Advocacy

- Website and E-News
- TRC Blog
- Watershed Signs
- Educational Presentations
- Get People on the Water
- Volunteer Stream Monitoring
- Support Partners' Work





www.TwoRiver



HOME ABOUT US THE WATERSHEDS PROGRAMS NEWS AND RESOURCES MEMBERSHIP / DONATIONS

HOME ABOUT US THE WATERSHEDS PROGRAMS NEWS AND RESOURCES MEMBERSHIP / DONATIONS

- The Watersheds
- Black River Watershed
- Paw Paw River Watershed
- Management Plans
- Watershed Municipalities
- Lake Associations
- Other Useful Links

Home>The Watersheds

### The Watersheds

#### What is a watershed?

A watershed is the area of land that captures precipitation and snow and drains or seeps into a stream, river, lake or groundwater.

You are sitting in a watershed now. Homes, ranches, forests, small towns, big cities and farms can make up watersheds.

Some watersheds cross county, state or international borders such as the Great Lakes Basin.

Watersheds come in all shapes and sizes. Some are millions of square miles, others are just a few acres.

Just as creeks drain into rivers, watersheds are nearly always part of a larger watershed or basin.

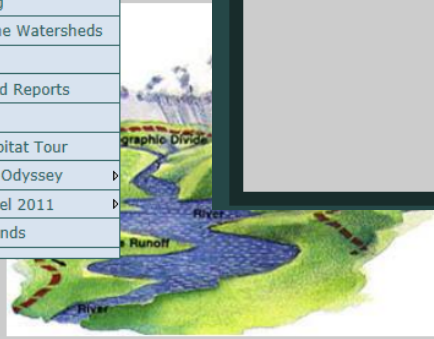
For example the Paw Paw River Watershed is part of the St. Joseph River Watershed which is part of the Lake Michigan Watershed which is part of the Great Lakes Basin.

Every drain, stream, tributary, river, lake and wetland has an associated watershed.

Learn more about the Two Rivers Watersheds by clicking the links on the left side of the page.

TRC has been work with county road commissions within the Black and Paw Paw River Watersheds to place signs along roadsides entering watershed boundaries. The goal of this project is to inspire individuals and groups to educate themselves on the importance of a watershed and be more involve in the water quality and preservation. Please contact your local Road Commission and encourage them to place the signs throughout the watersheds in Berrien, Kalamazoo and Van Buren Counties.

- NEWS and RESOURCES
- Natural Shoreline Landscaping
- Paddle Events - 2014
- Let It Flow Blog
- Articles from the Watersheds
- News Releases
- Publications and Reports
- Useful Links
- Black River Habitat Tour
- Paw Paw River Odyssey
- Odyssey: Sequel 2011
- Michigan Wetlands



Home>Membership/Donations

### Membership/Donations

- Membership / Donations
- Become a Member
- Renew Membership
- Donations
- Become a TRC Contact

MEMBERSHIP / DONATIONS
Become a Member
Renew Membership
Donations
Become a TRC Contact

#### Become a Member

By joining Two Rivers Coalition today, you will be welcomed into a family of dedicated individuals committed to protecting the health of the Black River and Paw Paw River Watersheds.

#### Renew Membership

By renewing your membership with Two Rivers Coalition, you'll help ensure future generations enjoy the lands and waters we work to improve and protect.

#### Donate Online

By giving an online donation you are providing essential funding for conservation, educational and advocacy initiatives that have been identified as needing the most support.

#### Volunteer

Two Rivers Coalition depends on volunteers to work towards our mission. Many volunteers serve on committees working on different projects to protect and improve water quality in the Black and Paw Paw River Watersheds. If you are interested in helping TRC protect and improve water quality, consider serving on a committee.

#### Become a TRC Contact

If you are not ready to commit to a paid membership, but want to stay informed of TRC activities, you can sign up to be a TRC contact.

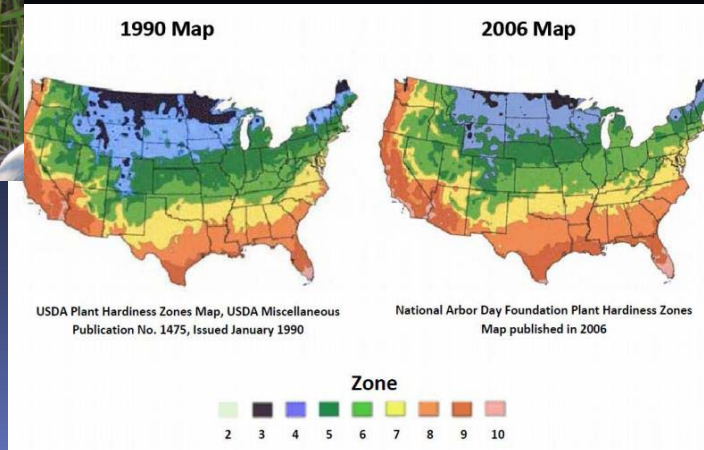
This page last updated on 10/19/2012.

- Being informed and engaged is key.
- A one-stop-shop for information on issues and how to improve and protect our water.

# Let It Flow Blog

(2<sup>nd</sup> Year)

- Tipping Points...  
Or Why I Rode a Bus All Night to NYC
- Plastic Perdition
- Everglades Epistle
- Apples and Cherries and the Jet Stream, Oh My!





# Watershed Boundary Signs

## *Berrien County Road Commission*



# Paw Paw Library Rain Garden

## Paw Paw District Library **Prairie Grass**

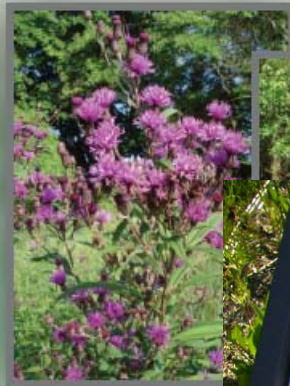
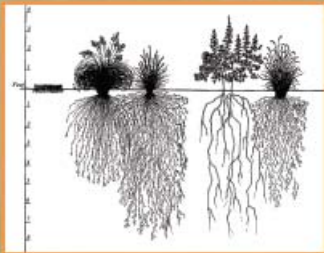
### What is a Native Prairie?

A native prairie is a low maintenance landscape that uses native grasses and wildflowers to mimic historic natural land cover. Significant portions of southern Michigan were once covered with grass and wildflower prairies and savannas. Since native plants are already adapted to local climatic conditions, they can do well with natural levels of rain as their roots can reach depths of more than 15 feet in search of water. The roots of turf grass, on the other hand, only go about 3" deep.

### What are the benefits of a Native Prairie?

- Provides an attractive and ultimately low maintenance landscape solution.
- Improves water quality and holds soil in place
- Attracts birds & butterflies and provides wildlife habitat.
- Sequesters Carbon

Illustrated here: Kentucky Bluegrass roots (left) extend 3" down, compared to the roots of native prairie plants: Prairie Dropseed, Side-Oats Grama, White Wild Indigo and Little Blue-stem whose roots can reach depths of 8' or more. Diagram courtesy of: Conservation Research Inst.



### What you can do to Create your own Rain Garden

1. Select a site on your property
2. Eradicate the existing vegetation
3. Select plants based on soil type
4. Broadcast seed by hand
5. Mow area twice per year
6. More information- visit [www.raingardens.org](http://www.raingardens.org)

## Paw Paw District Library Rain Garden

**What is a Rain Garden?**

A rain garden is a special garden with a dip in the center to collect water running off roofs, pavement or lawns. It is typically planted with native shrubs, wildflowers, and grasses.

A rain garden reduces water pollution by slowing the water down and allowing it to soak into the ground which filters out pollutants such as sediment and excess nutrients.

**What are the Benefits of Rain Gardens?**

- Rain gardens are a beautiful solution to help keep our streams, rivers and lakes clean.
- Native plants need less water, fertilizer and pesticides—saving time and money.
- Rain gardens attract birds and butterflies.



New England Aster



Gloriosa Daisy



Prairie Dropseed



Purple Coneflower

**What YOU can do**

Plant a rain garden in your yard to protect the lakes and rivers:

1. Select a spot in your yard to capture water runoff from the roof, paved areas or lawn.
2. Use a shovel to create a shallow dip.
3. Replace soil if needed. A good mix is 50-60% sand, 20-30% topsoil, and 20-30% compost.
4. Plant with native plants (like those above).
5. Visit [www.raingardens.org](http://www.raingardens.org) for more information.

Rain garden provided by a special gift from Walt and Nadine Jarvis.



# Presentations/Workshops

## Who Cares About Non-Native Plants?

A discussion hosted by the Two Rivers Coalition

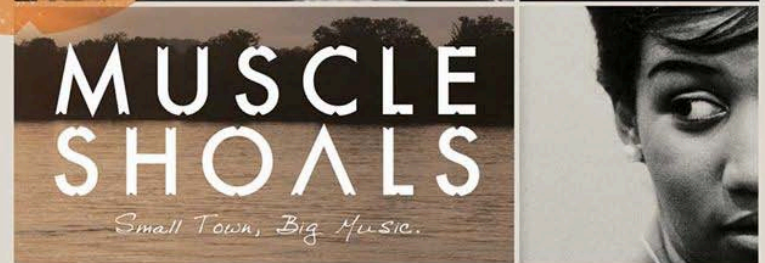
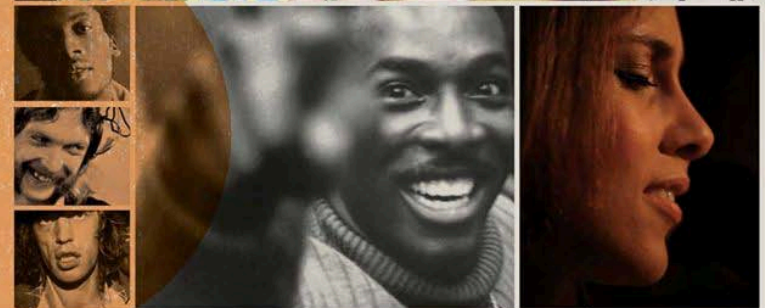
### Speakers:

Brian Majka, restoration ecologist with Cardno/JFNew

Mitch Lettow, Stewardship Specialist with the Southwest Michigan Land Conservancy



# Fundraising Events with Foundry Hall



3.30PM, 26 JAN, ECCLES THEATRE / [MUSCLESHOALSMOVIE.COM](http://MUSCLESHOALSMOVIE.COM) / #MUSCLESHOALS  
FEATURING: ARETHA FRANKLIN, BONO, ALICIA KEYS, GREG ALLMAN, MICK JAGGER, ETNA JAMES,  
JIMMY CLIFF, KEITH RICHARDS, PERCY SLEDGE, STEVE WINWOOD, BONNA JEAN GODCHAUX -  
AN EAR GOGGLES PRODUCTION - DIRECTOR OF PHOTOGRAPHY: ANTHONY ABERNOT - EDITOR: RICHARD LOWE -  
ASSOCIATE PRODUCER: LINDA LIVINGSTON - PRODUCED BY: STEPHEN BADGER, GREG 'FREDDY' CAMALIER -  
DIRECTED BY: GREG 'FREDDY' CAMALIER



# Paddles and Outings



## Group Paddle Black River Preserve

Saturday, September 13

9:30am—1:00pm

1:15pm-2:45pm—Optional Paddle to Phoenix Rd. or  
Optional Hike of the Black River Preserve

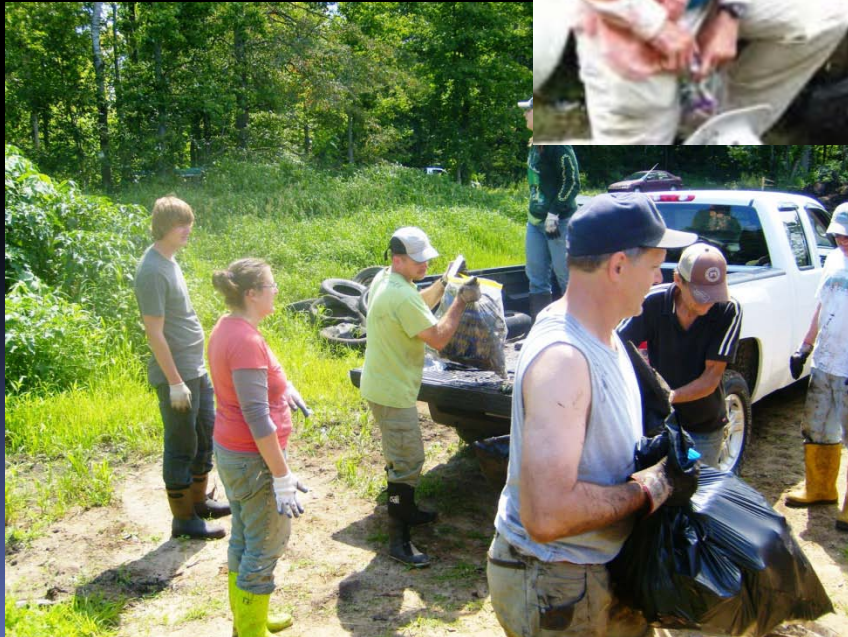


[www.MichiganWaterTrails.org](http://www.MichiganWaterTrails.org)



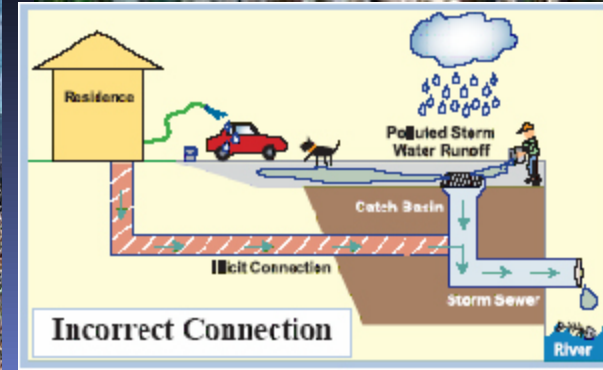
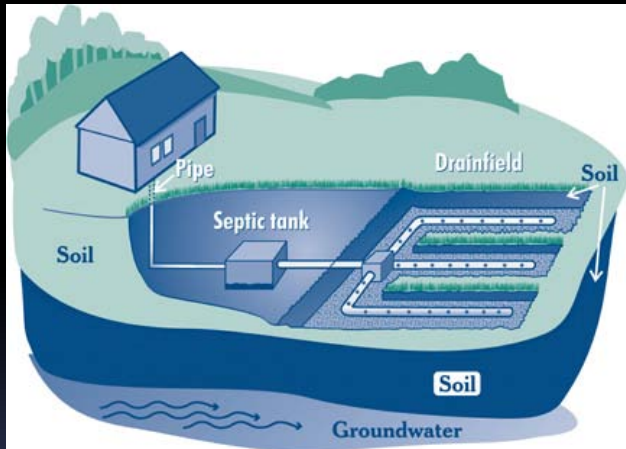
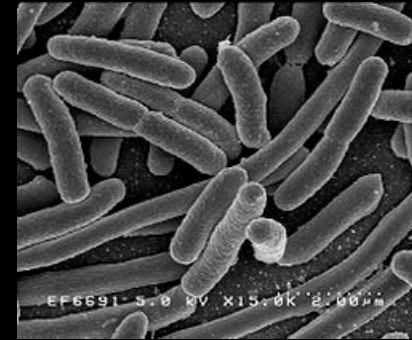
# River Rescue

Volunteers at annual River Cleanup Day

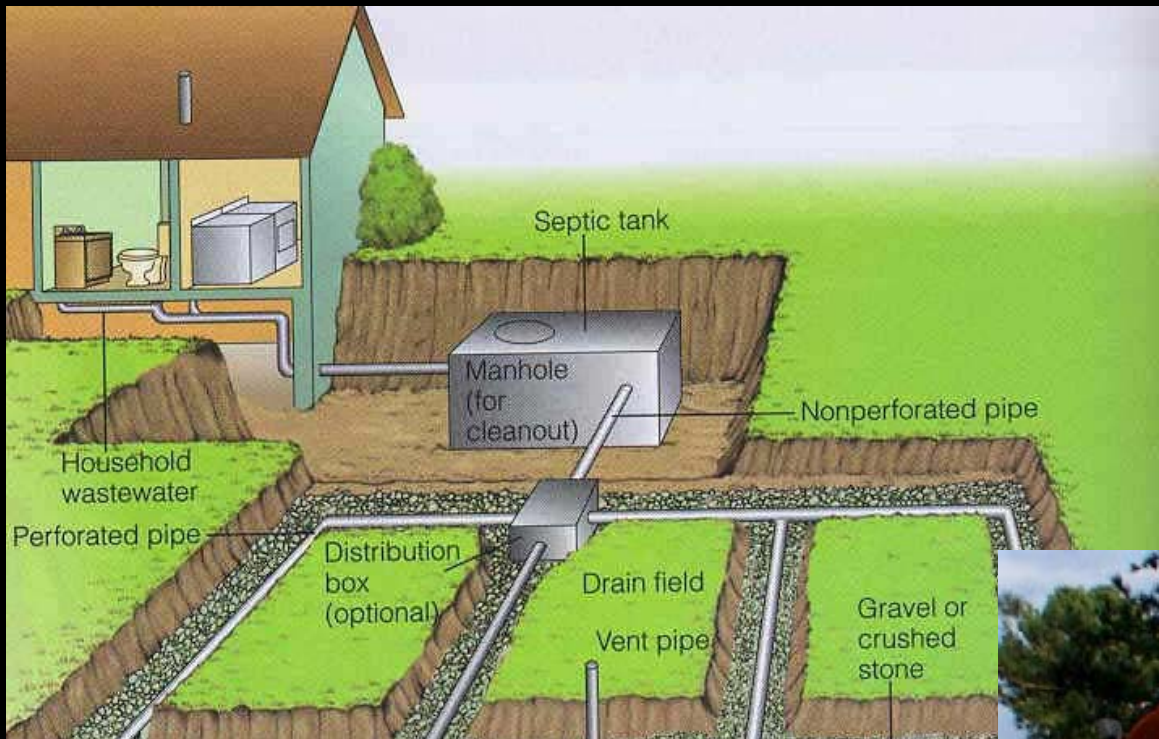


# Black & Paw Paw Rivers - Bacteria Monitoring Project

- Action Plan to Reduce E coli levels



# Septic Systems



**Pump It Every  
Three Years!**

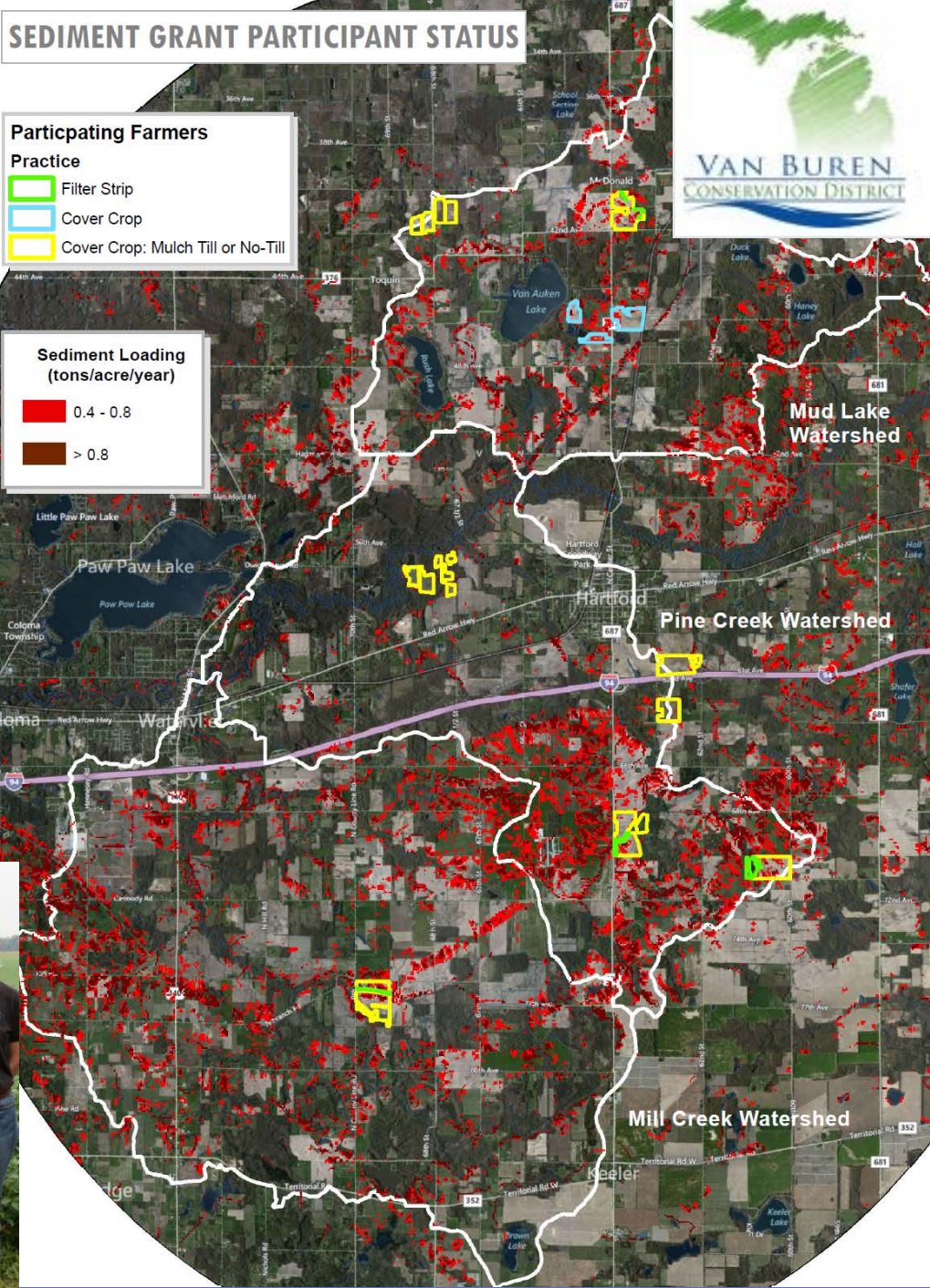




# Reducing Sediment

360 acres of No Till  
 230 acres Mulch Till  
 1,400 acres Cover Crops  
 11 acres Filter Strips  
 6 acres of Grassed Waterway

**= 6,869 TONS**



**GOT CORN?**

The Van Buren Conservation District has something for you!

**FIELDPRINT CALCULATOR** Get paid \$50 to learn the carbon footprint of your farm!

**GET PAID FOR BMPs**

- \$20K / landowner to put Best Management Practices (BMPs) on eligible land\*
- BMPs include: Cover Crops, Filter Strips, Reduced-Till and No-Till Practices
- Enroll your fields now for the 2014 growing season

**FARMING for the FUTURE**  
 at the Van Buren Conference Center, 490 S. Paw Paw St. Lawrence

**Free Event! RUP Credits!**  
 Crop experts will share how to improve productivity while reducing costs.

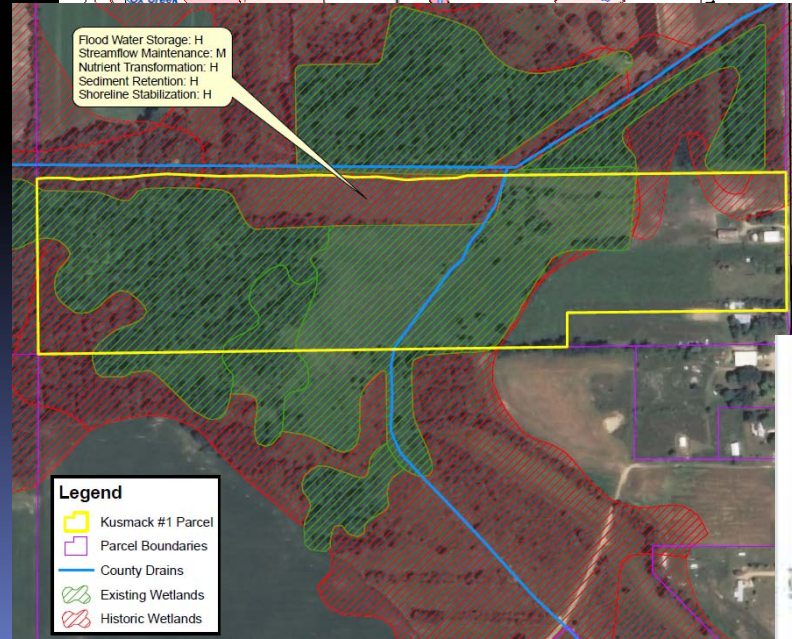
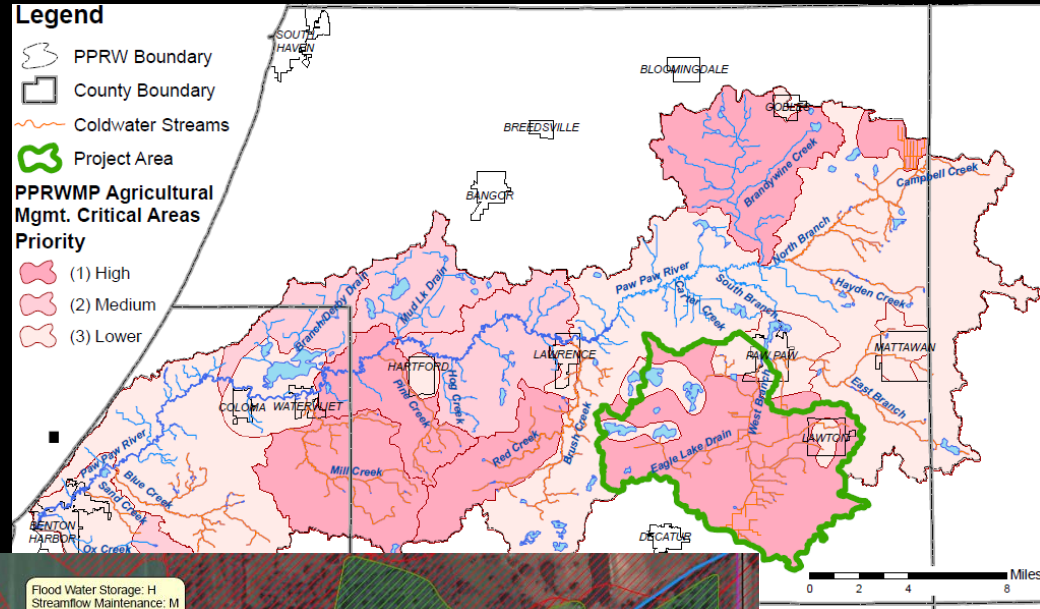
**Thursday NOVEMBER 21 9am**

\*Contact Colleen Forestieri for more information and to learn if you're eligible (269) 657-4030 x 129 <http://vanburendc.org/>



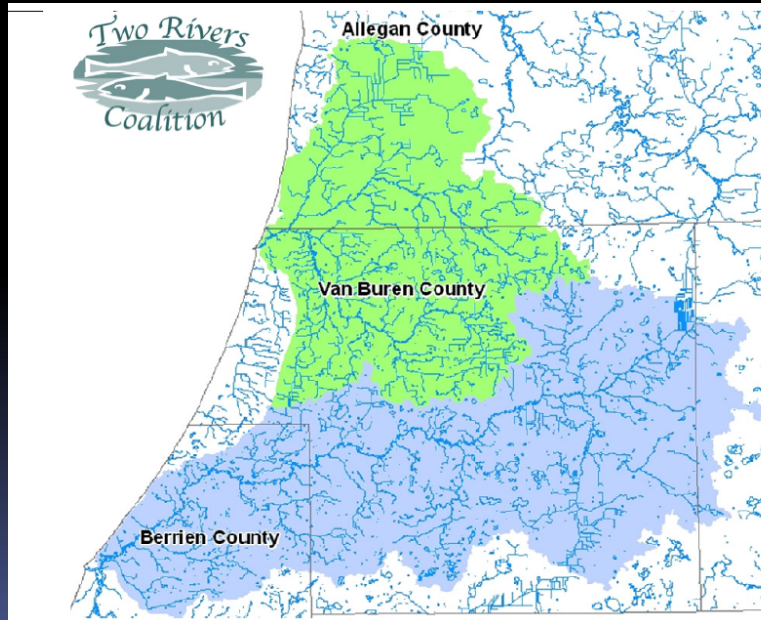
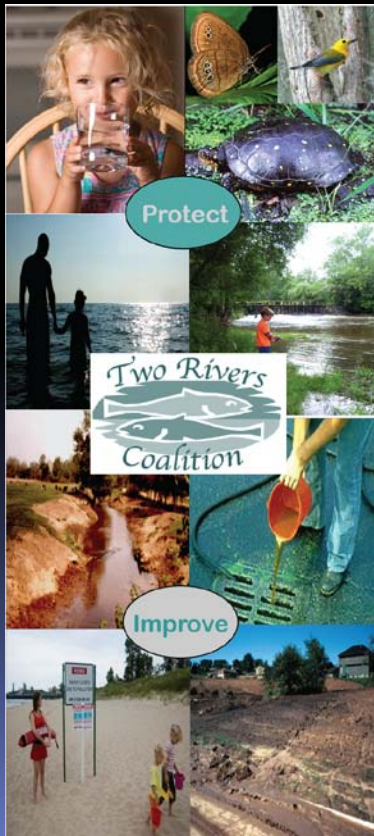
# Improving Water Quality in the South Branch Watershed

- Survey Farmers
- Agricultural BMPs
  - 460 acres cover crop
- 15 acre Wetland Restoration and Easement



# Increasing Membership & Support

	2009	2010	2011	2012	2013	2014
<b>Contacts &amp; Members</b>	475	592	694	777	791	?
<b>Annual Meeting Attendance</b>	65	73	75	69	69	76



TRC is a citizen-based 501(c)3 organization working to protect the health of the Black River and Paw Paw River Watersheds through conservation, education, and advocacy. *All donations to TRC are tax deductible to the extent allowed by law.*

**TRC's efforts to protect and improve water quality include:**

- ◆ Informing and influencing local officials
- ◆ Sponsoring activities such as creek clean-ups and stream bank improvements
- ◆ Protecting wetlands and wildlife habitat with our partners
- ◆ Educating the general public about water friendly lawn care, riparian buffers, wetland protection, septic systems and other watershed issues

Join Two Rivers Coalition at [www.tworiverscoalition.org](http://www.tworiverscoalition.org)

*We make a living by what we do,  
but we make a life by what we give* Winston Churchill

- **Make a Donation to TRC**
- Take an active role
- Talk about issues & about TRC to friends, local officials and kids!



Enthusiastic volunteers collect macro-invertebrate samples



# TRC Board of Directors

**Sam Ewbank, President**  
**Kevin Haight, Vice-President**  
**Kenneth Nesbitt, Treasurer**  
**Joe Parman, Secretary**  
**Tom Howe**  
**Frank Jurenka**  
**Grant Poole**  
**Joe Von Wahlde**  
**Bette Pierman**  
**Colleen Forestieri**

*Volunteers don't  
just do the work ~  
they make it work.*  
- Carol Pettit

