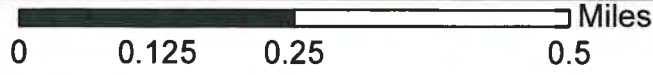
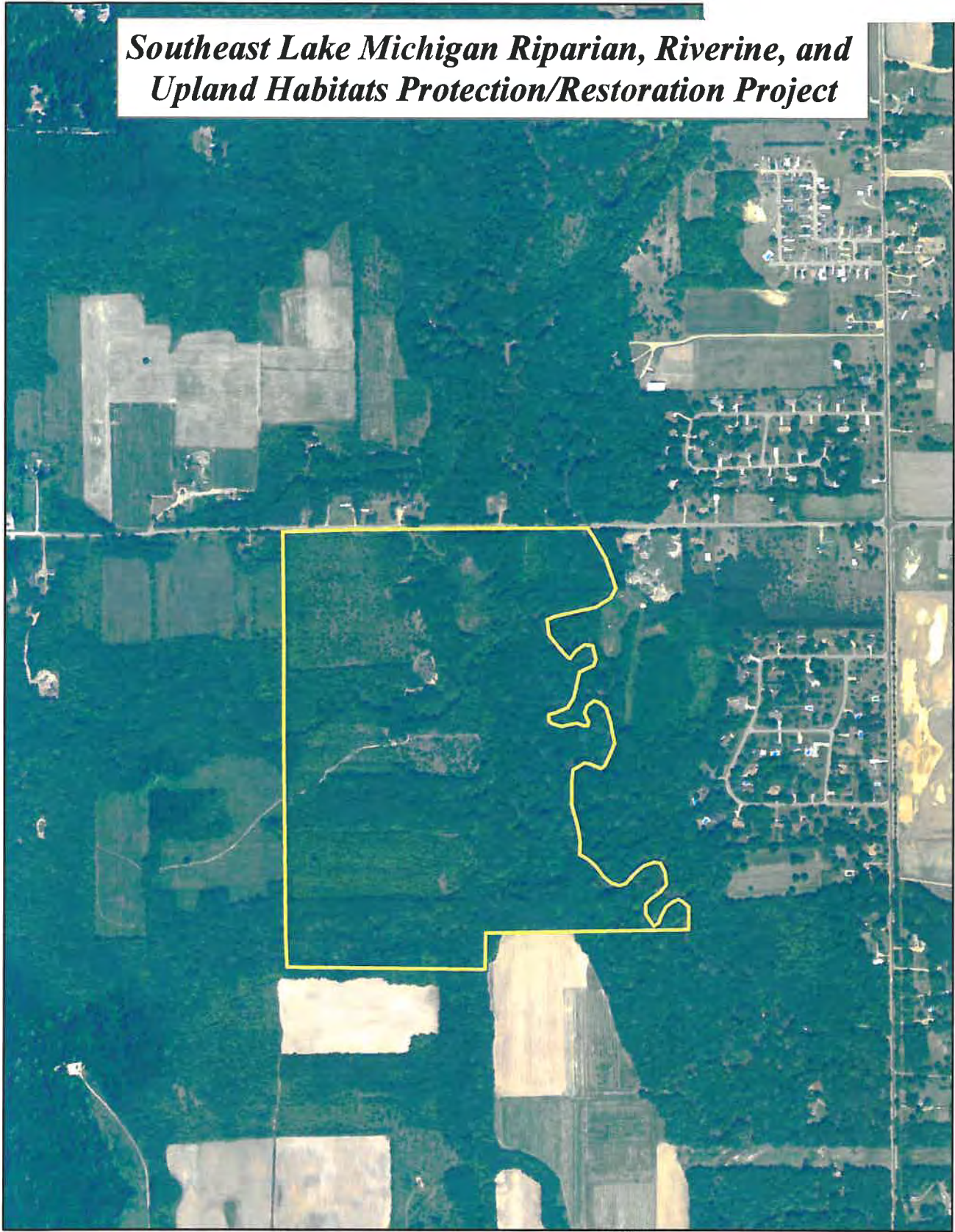
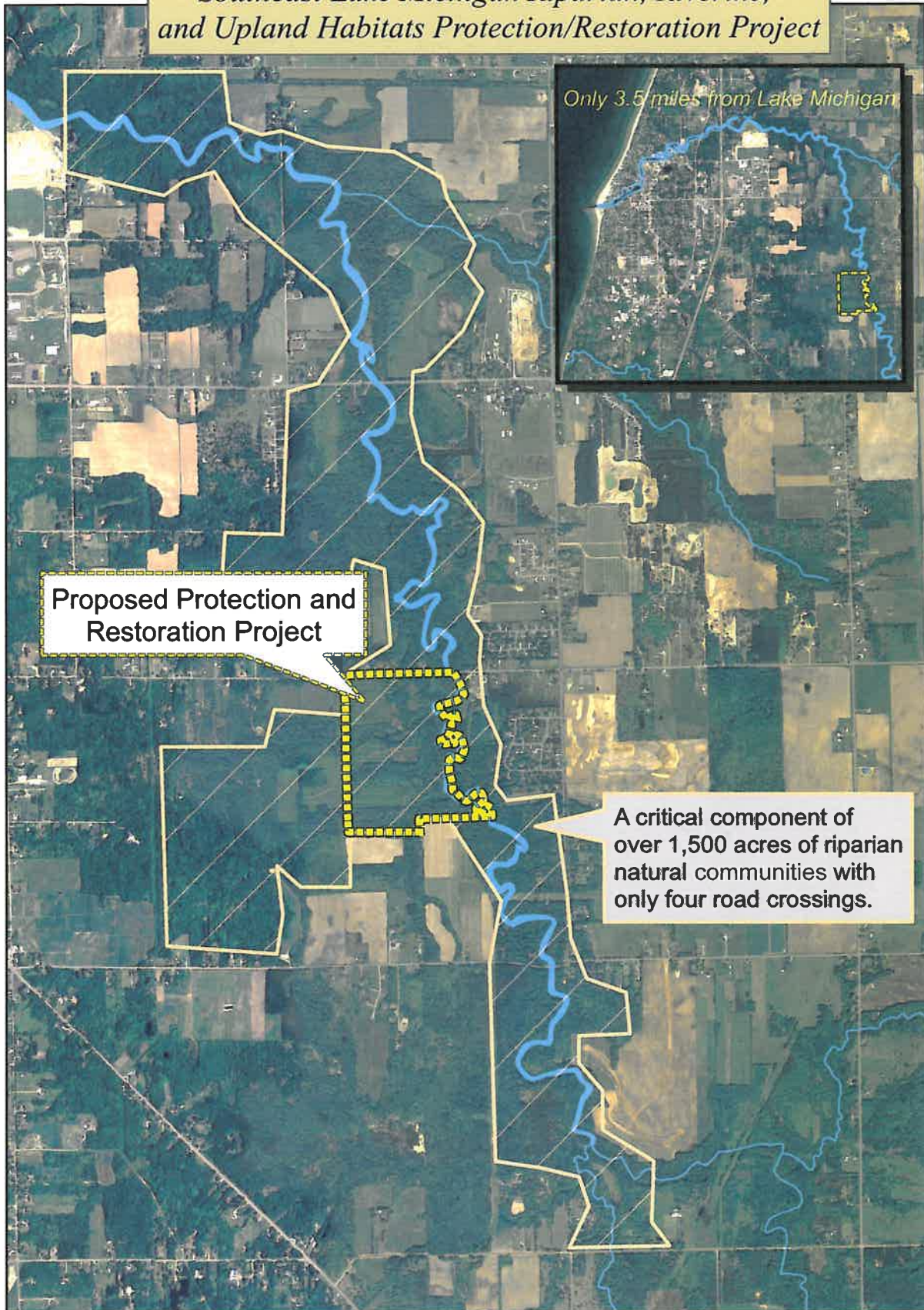


***Southeast Lake Michigan Riparian, Riverine, and
Upland Habitats Protection/Restoration Project***



*Southeast Lake Michigan Riparian, Riverine,
and Upland Habitats Protection/Restoration Project*



Only 3.5 miles from Lake Michigan

Proposed Protection and Restoration Project

A critical component of over 1,500 acres of riparian natural communities with only four road crossings.



View of the Black River on the Northeast Portion of the Subject Property
Photo by Scott M. Carlson, March 20, 2011



Example of Sloping Topography on Northeast part of Subject Property
Photo by Scott M. Carlson, March 20, 2011



View of Tributary to the Black River on the Northeast Portion of the Subject Property
Photo by Scott M. Carlson, March 20, 2011



Northerly View of Agricultural Area on Southerly part of Subject Property
Photo by Scott M. Carlson, March 20, 2011

Southeast Lake Michigan Riparian, Riverine, and Upland Habitats Protection/Restoration Project

HABITAT PROTECTION...

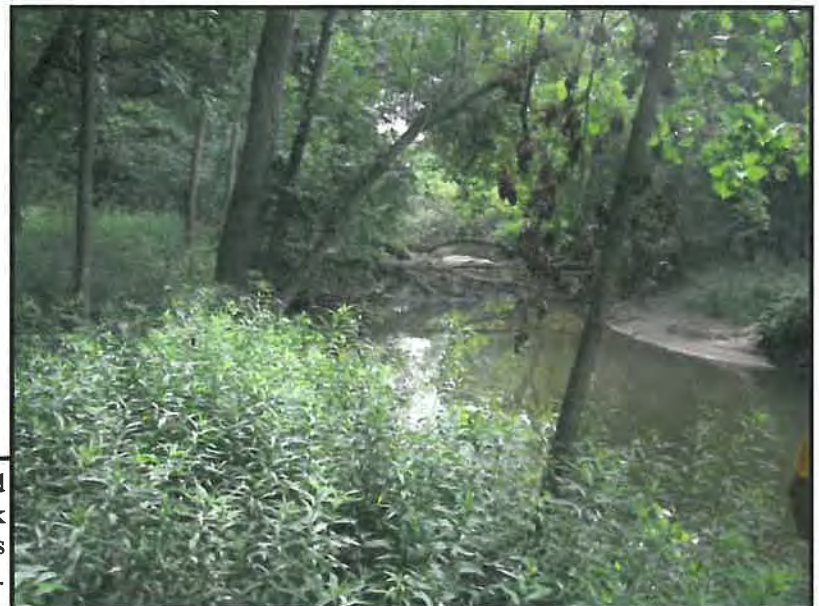


Intact natural communities along the Black River offer valuable habitat identified in all four Joint Venture bird plans. Large blocks of riparian forests are interspersed with occasional wet meadows and semi-permanent marshes.

Floodplain forests and southern mesic forests transition from nearly a mile of river frontage and 3/4 of tributary streams up into oak woodland remnants. These forests offer breeding and foraging habitat for birds such as Prothonotary Warblers, Wood Ducks, American Woodcock, and Green Herons as well as rare wildlife including the Eastern Massasauga Rattlesnake.



Tributary ravines provide microclimates and habitat structure that are favored by Louisiana Waterthrush and Hooded Warblers and many other forest interior species.



Both migrating and breeding waterfowl and waterbirds utilize the slow waters of the Black River. Protecting frontage along the river helps ensure its continued value for wildlife.

Southeast Lake Michigan Riparian, Riverine, and Upland Habitats Protection/Restoration Project

... AND RESTORATION



Southwest Michigan Land Conservancy and Conservation Research Institute formed a partnership to protect and restore the high quality natural communities of the Garvey Property.

Dr. Gerould Wilhelm (second from left) identified over 300 plant species in his initial site visit, including several new county records.

Many of the forest communities are in excellent condition. However some areas are showing signs of degradation. Exposed roots demonstrate that soil is being lost due to erosion and lack of soil-building native vegetation.



Historic pasture lands fragment forest communities. Restoration of these areas will augment large-patch habitat opportunities for area sensitive bird species.



High banks along three separate tributaries are facing significant erosion issues, contributing significant sediment loads to the Black River.